



# The Expo Line

Speed · Comfort · Capacity





# Alternative to I-10 traffic



# Light rail success





# San Diego



Opened 1981



# Portland



Opened 1986



# Phoenix





# Seattle





# Pasadena Gold Line



STOP CLEAR  
KEEP

Opened 2003



# Eastside Gold Line





# Phase 1 – from existing Blue Line





# Flower Street improvements





# Blue Line track booting





# Washington



Jul. 2009



# 23<sup>rd</sup> Street station

Program of Orthopaedic

Los Angeles Orthopaedic Medical Center  
The Center for Orthopaedic Care

Orthopaedic Hospital  
North Hollywood High School  
Los Angeles Medical School District

Westside Campus  
Santa Monica Medical Center and  
Orthopaedic Hospital

Los Angeles Orthopaedic Medical Center

Aug. 2009



# Flower bridge demolition









# Flower bridge falsework





# Flower St. before



Jul. 2007



# Welding rails







Apr. 2009



# Flower-Figueroa underpass



Jul. 2007





Expo Authority

May 2008

NO LEFT TURN

Arine Auditorium →

EXHIBITION EVENT PARKING ↓

ROAD CLOSED

ROAD CLOSED

25

STOP

Prohibited

STOP

STOP

NO LEFT TURN

STOP

STOP

STOP













Justin Walker

May 2009



# USC Trousdale station



Jul. 2009





Expo Authority



# Exposition Blvd. median







Jan. 2007





Jul. 2009







# Foshay ped tunnel



JAMES A. FOSHAY  
A SACRAMENTO COMMUNITY COLLEGE DISTRICT  
SCHOOL  
NURSERY - GRADE 12

Jul. 2009



# Eastside Gold Line



Sep. 2009



# Embedded lights



NO  
RIGHT  
TURN  
ON RED

DIVIDED  
STREET

West Street  
Columbus St.  
Franklin Park

St. Joseph  
Republic Center  
Cleveland

Hillcrest  
Missouri District  
Medical Center

MAR 15 2006

Expo Authority



# EXPOSITION METRO LIGHT RAIL



# METRO Light RAIL



# Crenshaw station



May 2009



# Soundwalls



Aug. 2009



# Dorsey High ped bridge





# Utility relocation





# La Brea bridge











NDON JOHNSON  
ASSOCIATES, INC.  
P.O. BOX 1000  
3040

MACK

6K51942

Nov. 2008





LUCIANO  
CONSTRUCTION  
CORPORATION  
1234 5678 91011  
1234 5678 91011

LUCIANO  
CONSTRUCTION  
CORPORATION  
1234 5678 91011  
1234 5678 91011

Jul. 2009







# La Cienega







**UNIQUE**  
MAYOR ATHERTON'S MESSAGE  
FOR THE PEOPLE OF THE WORLD  
AND THE PEOPLE OF THE WORLD

M



# Ballona Creek bridge







Public Storage

SMMK out

Oct. 2008





Mr. Crane  
INC.  
714 633-2100

Mr. Crane  
INC.  
714 633-2100

Nov. 2008





Mar. 2009





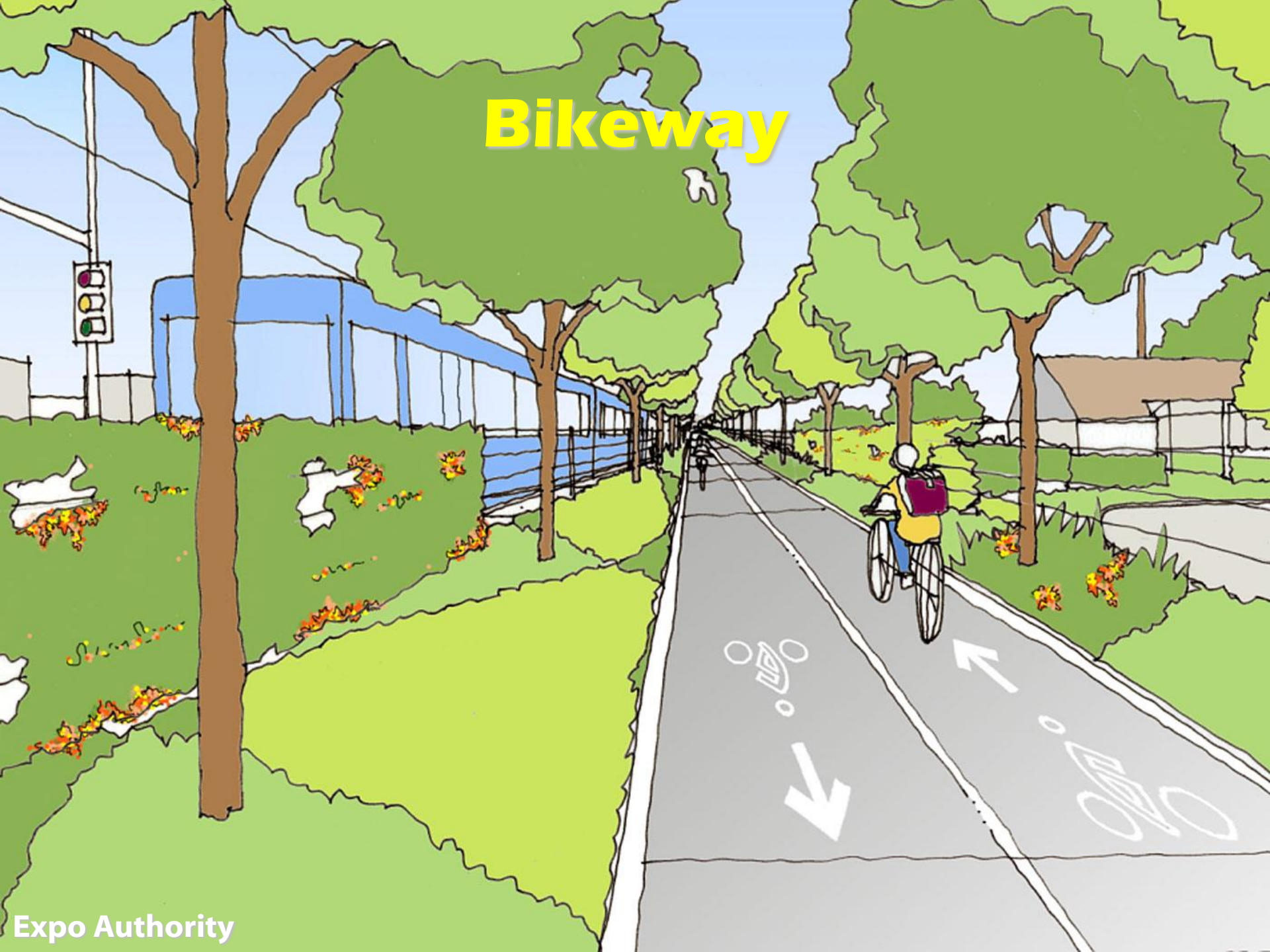
Public Storage

STOP AT  
LIGHTS

181



# Bikeway





# Drilling rig





# Culver City station site



Apr. 2008



# Freight trains until 1980s





# Culver City – end of phase 1





# Phase 2 – Venice-Robertson





# Palms station





# Motor bridge





# Tunnel under freeway





# Trench between Cheviot Hills & freeway



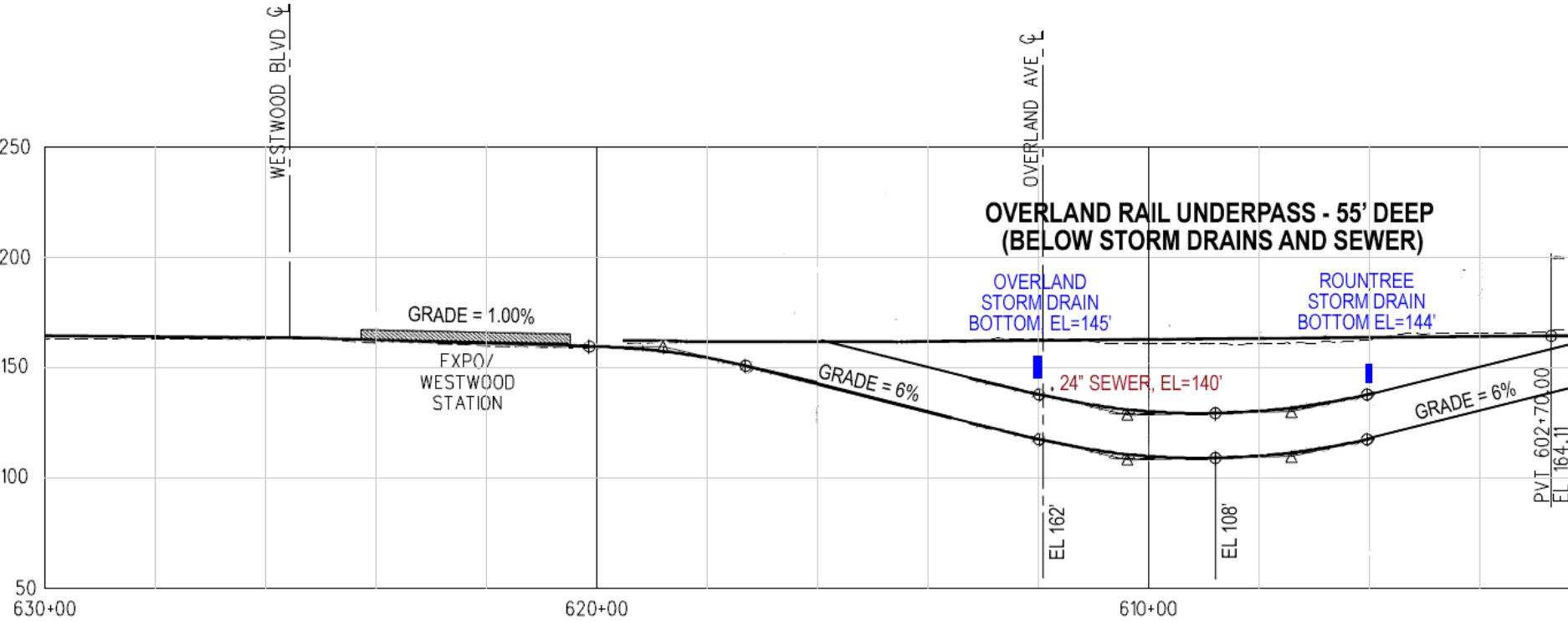


# Overland Ave. ~ Metro Grade Crossing Policy





# Overland tunnel?





# Green Corridor Concept

JOGGING TRAIL & CYCLEWAY

PERMEABLE PAVEMENT AND  
RECHARGES LOCAL GROUNDWATER  
BIOREMEDIATION IMPROVES WATER  
QUALITY.

STORMWATER DRAIN  
DAYLIGHTS

EXPOSITION BLVD.

OVERLAND AVE

EXPO LIGHT RAIL LINE

WESTWOOD BLVD.

DEAN HOWELL

EXPO - "GREEN CORRIDOR"

CONCEPT.





# Bus connections





# Sepulveda bridge option





# Sawtelle-Pico





# Bundy aerial station



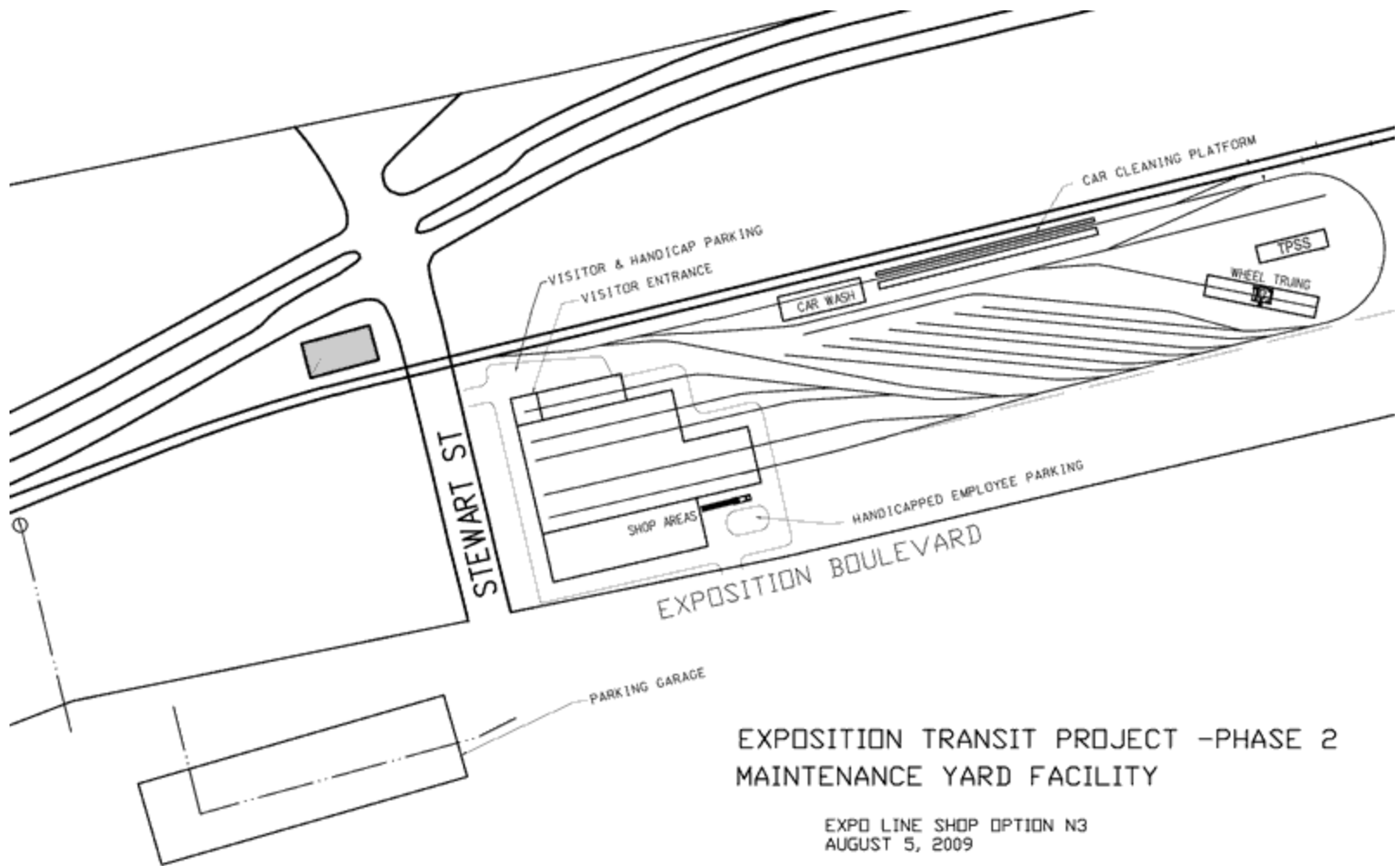


# Centinela bridge





# Maintenance facility







NOTICE







Exposition Boulevard and Dorchester Avenue  
Santa Monica, Ca.

## City of Santa Monica

**This concept is for illustration purposes only. Conceptual design would incorporate input from an extensive community process.**



## Bergamot Transit Village



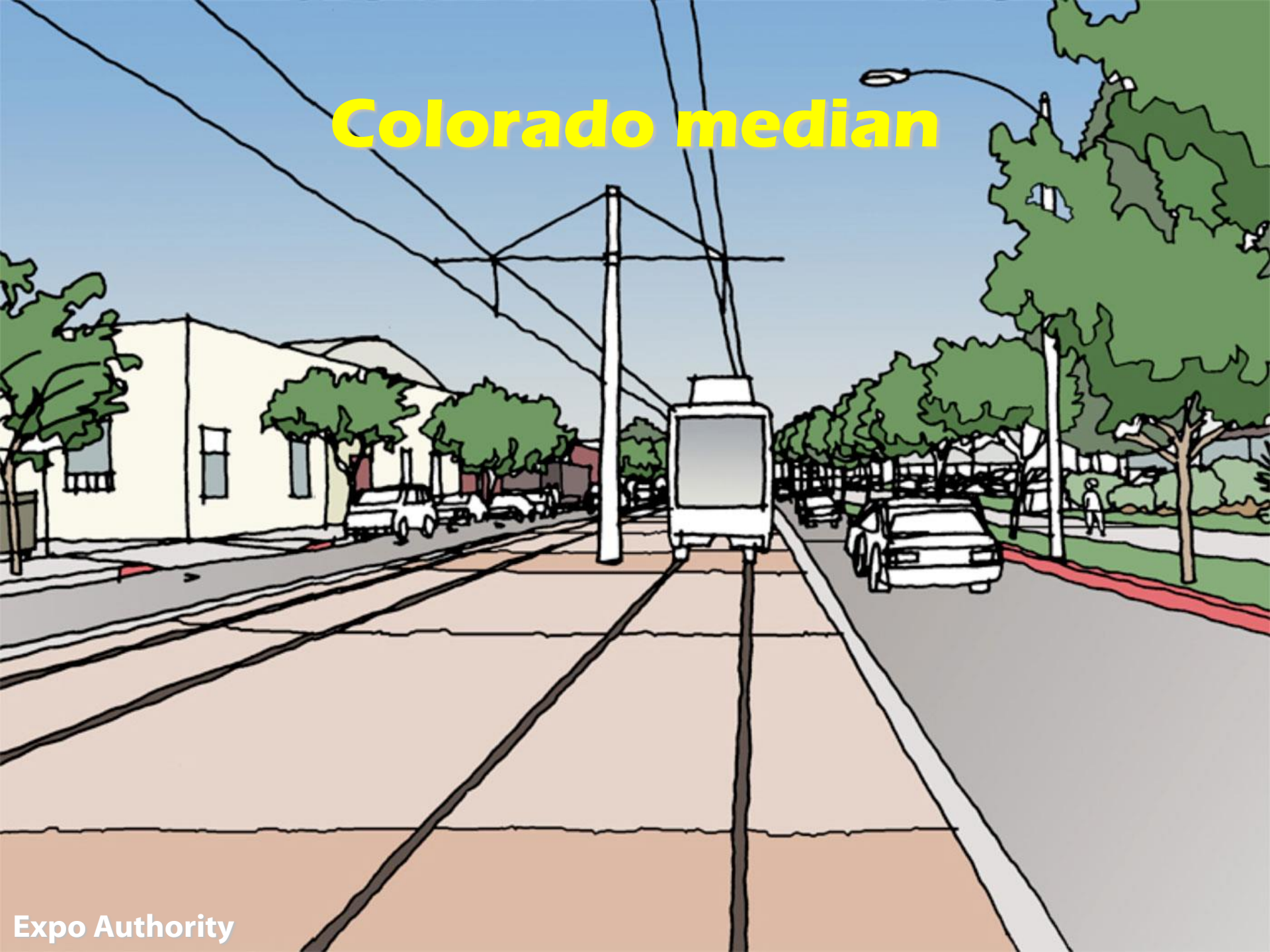


# Cloverfield & Olympic bridge





# Colorado median





# Santa Monica terminus – Sears Auto Center





# Station plaza





# Third Street Promenade



VEHICLES PROHIBITED  
BICYCLES, SKATEBOARDS  
AND SKATES PROHIBITED

Altares de la Plaza

Estates  
MILANO

PERINI

BERNINI

CLF  
LA  
EMERIT

CLF  
LA  
EMERIT

THIRD STREET FOUNTAIN  
Dedicated to the City of San Diego  
by the City of San Diego  
and the People of San Diego  
1992





# The Expo Line

Speed · Comfort · Capacity





# Census

